

SOUNDSETTER[®]

SIMPLE SOUND SELECTION

Installation Guide



MINDWARE MUSIC END USER LICENSE AGREEMENT

Caution: Opening the sealed media package or running this installation program indicates you are consenting to be bound by and are becoming a party to this agreement.

Mindware Music, Inc. or its affiliated companies ("Mindware") is only willing to provide the software to you under these terms and conditions. Carefully read these terms and conditions before opening the package. If you do not agree to them, promptly return the unopened package to Mindware or the dealer from which it was acquired for a full refund. The term "promptly" as used herein shall mean no later than sixty (60) days following the delivery of the software to you.

Subject to the following terms and conditions, Mindware Music grants to you ("User") a non-exclusive license to use the (MusiConsole) software product(s) identified in the install procedure and related documentation (collectively, the "Product").

1. Scope of License. Subject to payment of applicable license fees, User shall have a non-exclusive, nontransferable license to use the Product solely in connection with User's own internal business operations

subject to the following limitations:

1.1. the Product is licensed on a per CPU basis on a single machine, where the total number of CPUs

on the machine may not exceed the total number licensed to User;

1.2. The Product may not be transferred, sold, assigned, leased, rented, licensed, sublicensed, or otherwise

conveyed, in whole or part, by User to another party without Mindware's prior written consent.

This Agreement automatically terminates if User transfers possession of any copy of the Product or Product Update to another party. User shall have no right to use the Product(s) to provide

time sharing services or operate a service bureau for others.

1.3. User agrees not to cause or permit the reverse engineering, modification, decryption, extraction, disassembly, copying, or decompilation of the Product, except as required by applicable local law

or to reproduce machine-readable object code portions for backup purposes and installation of new

releases, under penalty of license termination but not exclusive of any other remedies. User may copy the Product only for archival purposes. Notwithstanding the foregoing, User does not have the right to copy the Product for standby, disaster recovery, or backup purposes. User may copy the documentation (in electronic format) accompanying the Product solely for the purpose of facilitating User's use of the Product in accordance with, and subject to, the terms and conditions

of this Agreement. User may not copy nor allow others to copy the Product or Product Update, or

any portion thereof, for any other purpose.

2. Mindware's Rights. The Product is a proprietary product of Mindware, or its licensors (if any), and is protected by copyright law. By virtue of this Agreement, User acquires only the non-exclusive right to use

the Product and does not acquire any rights of ownership in the Product upon which it is embodied. Mindware,

or its licensors (if any), shall at all times retain all rights, title, and interest in the Product. Except as otherwise expressly provided for in this Agreement, User acquires no rights of any kind in or to any trade

name, logo, or trademark of Mindware, or Mindware's subsidiaries, affiliates, or licensors, or any product

designation under which the Products were or are marketed and shall not make use of the same for any

reason except as expressly authorized by this Agreement or otherwise authorized in writing by Mindware.

System Requirements

General MIDI sound source:

General MIDI capable keyboard, or,
Internal soundcard with General MIDI .

Computer:

OS: Windows XP
Pentium III or faster CPU
Monitor with 1024x768 resolution
128MB RAM
5mb available storage

Musical:

Controller, Keyboard, Digital Piano or
other source of MIDI OUT data (transmit
on channel 1).

Headphones or amplifier/speakers.

Recommended:

For best performance, a Soundfont-
capable soundcard (Creative Labs SB
Live, Audigy Series or better) is recom-
mended.

Pre Install Hardware Notes

Soundsetter is designed for simple selection and layering of General MIDI sounds. Before installing Soundsetter, it's helpful (but not required) to get your hardware in order:

1. Know where you'll get your General MIDI sounds:

The table below provides an overview of the most common General MIDI options.

If you would like help determining which source is best for your situation, please contact Mindware Music/ePiano at 978-640-9778 for more information.

Choose a General MIDI Sound Source	Required MIDI IN/ OUT	Sound Quality	Notes/Considerations
Internal PCI Sound-card: i.e. Creative Labs Soundblaster Series (SBLive, Audigy, X-Fi etc) with General MIDI Soundfont.	MIDI IN	As good as the Soundfont file that is loaded - changeable.	Preferred solution. Integrates all audio into one connection - and offers flexibility in sound quality. Proven reliable and low latency.
Sound Module, Keyboard, or Digital Piano with General MIDI sounds built-in.	MIDI IN and MIDI OUT both required	Sound quality varies with manufacturer. Can be very good.	Computer sound and keyboard sound don't will come from separate places.
Laptop or system with GM Wavetable Synthesis	MIDI IN	Generally, lower quality sound.	May suffer from excess Latency (see troubleshooting) and inhibit performance as "live" performance sound source.
Other Soft Synthesis (VSampler, Bandstand, MUSE etc.)	MIDI IN	Varies, but can be very good.	Demanding on Computer System resources - requires special configuration to allow Soundsetter access - most Soft Synthesis is only recommended for experienced (or very brave) musical computers users.

2. Confirm you have a MIDI IN driver installed in your system.

If you already use music software with your keyboard, you're probably all set.

This means you either have a:

- >MIDI Interface properly installed and connected to your system, or
- >A keyboard with built-in USB connection (many controller style and more recent keyboards feature USB connections). The keyboard must be switched on for this to appear as a MIDI device.

Note: To use almost any MIDI program (not just Soundsetter), you will need MIDI IN/OUT capability. Please contact Mindware Music/ePiano at 978-640-9778 for more information or visit the ePiano Store via www.epiano.com for more information on MIDI interfaces.



A typical USB MIDI interface

3. Confirm your speakers and amplifier are connected and turned on.

If you're using any multimedia or MIDI software already, you've probably got this set.

Keyboards/Digital Pianos: If your keyboard has speakers, you're all set since you won't need separate amplification - be aware that your keyboard's volume controls and not your computer system's volume will adjust the MIDI sound volume.



Audio Connection Cables

System/Soundcard: If your sound comes from your computer/soundcard, you will need headphones or speakers connected to your computer's sound/headphone output.

Note: Amplification and speakers will have a significant effect on the sound you hear. No matter how high the quality of your actual sound source, it will suffer if heard through a low quality speaker or amplifier.


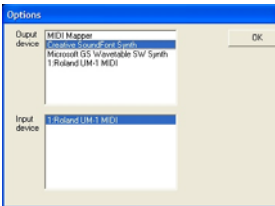
With knowledge and preparation of the above, your Soundsetter installation will be a breeze..

Software Installation

Install software on your system:

1. Place the Soundsetter CD in your Computer's CD Drive.
2. If your system is set up to run inserted CDs, and the installation starts automatically, go to step 4.
3. If the CD does not automatically run/start, then you can launch the setup file directly.
 - o Go to the Windows <Start> menu, select <My Computer> from the available options, and open your CD or DVD drive (typically the D: drive)
 - o Double click on the <SoundsetterSetup.exe> program icon.
4. When prompted, enter your installation password found on the front cover of this manual.
5. Follow prompts and read messages on screen as instructed by installation manager. Remove CD upon completion and store for backup purposes.

Choose <Edit Menu/Options> for your Hardware:

1. Start Soundsetter. If Soundsetter will not start, it means there is NOT an active MIDI IN source in your system. Return to Pre-Install Hardware Notes for more information.
 
2. From the top menu, choose <Edit> and then <Options> to select your MIDI options available on your system.
3. Choose your MIDI Output and Input Devices.
 

Output Device: Select the best sound source for General MIDI sounds. See Hardware Notes for more information on identifying the best choice, or adding others.

Input Device: Soundsetter requires a MIDI IN source in order to run. You must have an active installed MIDI Driver in your system. Most setups will have only one.

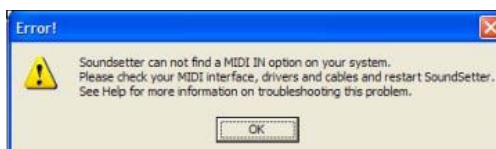
Troubleshooting

Error on Start

Likely cause: No MIDI IN driver installed/available.

This message indicates the absence of an active MIDI IN driver in your sys-

tem. The MIDI interface cable to your computer may be unplugged, the power may be off to a USB MIDI device, or there has never been a MIDI IN driver properly installed in the system. See Pre-Install Hardware Notes in this manual for more information about the proper hardware setup for Soundsetter. Check power, cables and retry.



No Sound (when playing keyboard)

Likely cause: Loss of MIDI IN connection

1. Check Metronome: Click the metronome on as a quick means to test whether your system is properly accessing its MIDI OUT sounds. If you hear the metronome, then your MIDI audio pathway is OK and go to step 4.
2. If you don't hear anything from the metronome, either your system is not accessing the General MIDI sounds or just as likely, you may just not be hearing them (i.e. Speaker/Amplifier not connected/turned on).
3. Check Amplifier/Sound: Check your speakers/amplifier by playing some other source of audio (i.e. internal sounds, or if system-based/soundcard-base sound, try iTunes, Media Player etc.
4. If you hear the metronome now, then the problem is with the MIDI IN selection or the power to your keyboard/controller.
5. Verify MIDI IN settings. See <Edit Menu/Options> to confirm your MIDI settings.

Latency (a delay between playing a key and hearing the sound)

Likely cause: MIDI Output Selection is GM Wavetable Synth.

Latency a function of a few variables and is not a technical error although it feels like one. Usually it comes from selecting the Microsoft Default GS Wavetable Synth as the MIDI out source (see Edit Menu) prepackaged

with most Windows PCs. While reasonably good sounding, due to the nature of computer/MIDI/Sound processing, this delay seems inevitable with most PCs.

The latency of the GS Wavetable varies between different computers - it is usually between 50 and 100 ms. As far as we are aware, there is no way to reduce the latency on any particular computer. Unfortunately, many new computers don't include a sound card with a built-in MIDI synthesizer, so choosing a "no-latency" MIDI output driver for live playback may not be an option. In an increasing number of cases the GS Wavetable is the only MIDI output driver choice, aside from purchasing a sound card or using an external synth/sound module for output.

See Pre-Install Hardware notes for more information on Sound sources.

I hear the wrong sounds or metronome doesn't "click"

Likely Cause: Sound source is not General MIDI compliant.

Often, a digital piano or keyboard may have a few internal sounds, but is not General MIDI capable. It won't have the required 128 "seats" of the various instruments and drums will not be on the assigned channel. See Pre-Install Hardware notes for more information on Sound sources.

Getting Started with Soundsetter

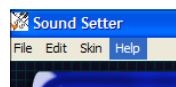
Using Soundsetter with the MusiConsole® :

Soundsetter is often installed as part of the MusiConsole experience. When using MusiConsole as your musical desktop/interface, you can launch Soundsetter from the <Sounds> button on the main "System Button" area.



Using Soundsetter as a stand-alone program:

Start Soundsetter like any other Windows program. Use the <Start> menu on the taskbar, choose <Programs>, and then <Mindware Music> from the programs list. Choose <SoundSetter> from the Mindware Music programs group.



Help with Soundsetter:

While Soundsetter's simple design makes it relatively easy to navigate and use, the newly designed Help System will answer most of questions about using Soundsetter. Choose <Help> from the Soundsetter menu bar.

For more information on installation, troubleshooting, etc. contact:

Mindware Music Inc./The ePiano Company at: